

# V60

## Oil Inject Screw Compressor



**PROFILE:** Planned to offer maximum performance, efficiency and duration. It guarantees high airflow with a minimum energy consumption and best performances are therefore guaranteed, even in extreme conditions.

**BEARINGS:** Radial and thrust bearings are created to be lasting. Only first quality bearings are used.

**FRONTAL SEALINGS:** No oil loss thanks to excellent materials and suitable dimension. Accessibility for a simple and fast replacement.

**APPLICATION:** For belt and direct connection.

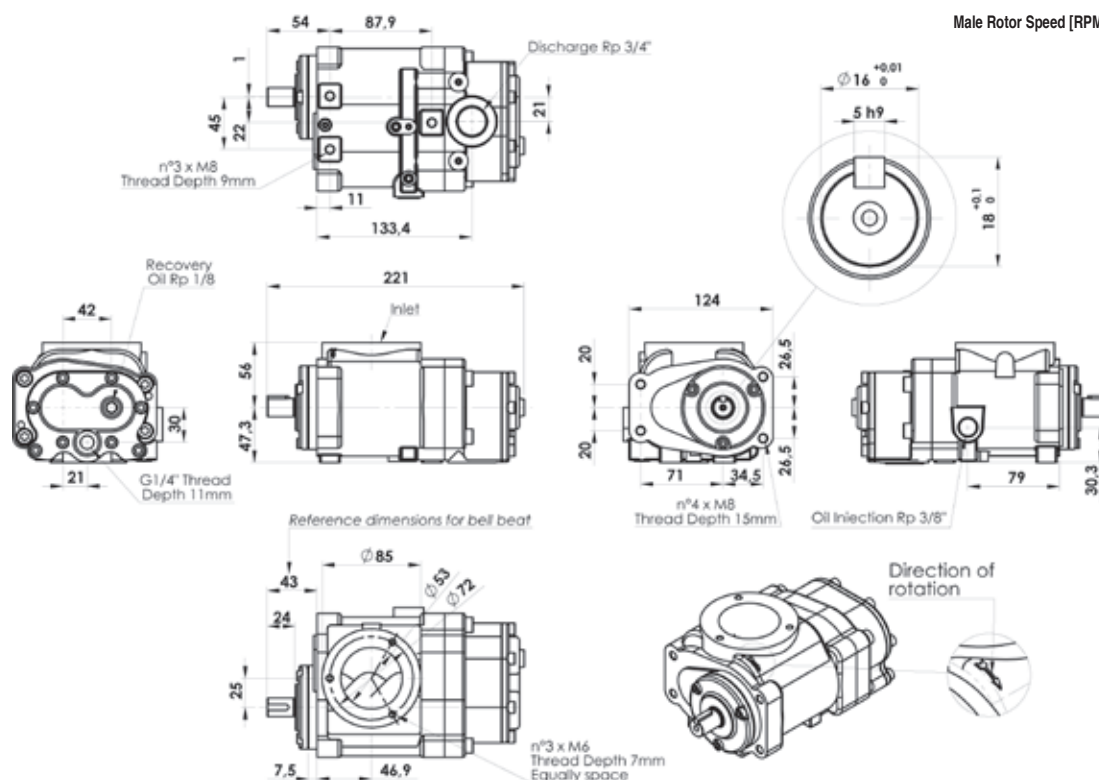
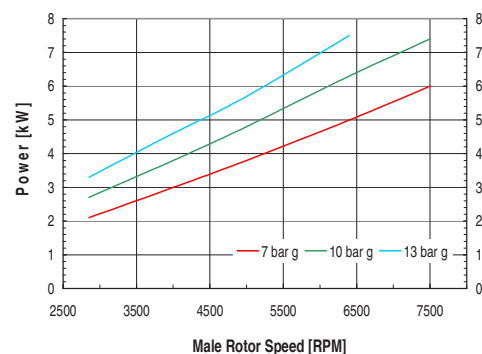
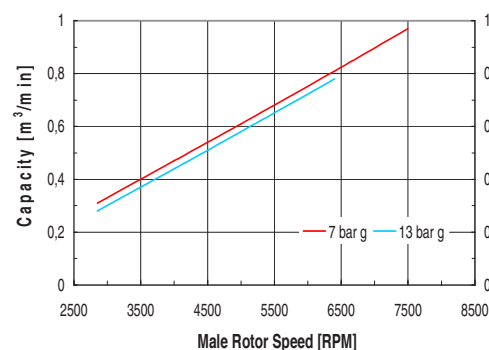
**ASSEMBLY:** Body parts are joined with O-rings, so the maintenance is easy, fast and reliable. No glues used to join parts.

**ROTORS ADJUSTMENT:** Threaded rings are used to adjust rotors for maintenance phases very fast, reliable and repeatables.

### TECHNICAL DATA

Size	V60	
Drive	Direct by coupling or belt	
Rotor dimensions		
Outside male diameter:	mm	59,7
Outside female diameter:	mm	47,7
L/D:		1,55
Air Capacity (ISO 1217 ANNEX B 1996)	m³/min	0,28-0,97
Max. Working Pressure	bar g	13
Min. Working Pressure	bar g	5
Oil injected Quantity	l/min	11-15
Max Input Power	kW	7,5
Max Main Rotor Speed	rpm	7500
Max Outlet air/oil Temperature	°C	105
Weight	kg	8,9

Air flow rate related to suction condition according to ISO 1217 annex C 1996:  
relative humidity: 60%; suction press. (abs.): 1 bar; suction temp.: 20°C; disch. temp.: 80°C





**SCREW:** Top quality components and ultra modern process technology ensures maximum quality, reliability and performance in the long run.

**INTAKE ADJUSTMENT:** Available by request in the ON/OFF version or non-return version.

**MINIMUM PRESSURE VALVE:** Internal components in stainless steel, viton seals, incorporated check-valve. Adjustment of the opening pressure.

**THERMOSTATIC VALVE:** Simple and reliable with total filtration. Different temperature range thermostats are available.

**OIL RECOVERY VIEWER:** Complete with calibrated nozzle, transparent surface for immediate control of correct operations and check-valve.

**SAFETY VALVE:** CE certified, available for various operating pressures.

**TANK SEPARATOR:** Tested for operating pressures of up to 15 bars with certification enclosed. Complete with filling plug, drainage tap and oil level window.

## TECHNICAL DATA

Size		Pack Smart/D	Pack Smart/B	Pack Smart/G
Power	Kw	from 2,2 to 3	from 4 to 7,5	from 4 to 7,5
Drive		Direct	Belt	Gear
Working Pressure	Bar	see diagram of V60		
Air Flow Rate	m <sup>3</sup> /1'	see diagram of V60		
Oil Rate Flow	Lt/1'	12.5 max	15 max	15 max
Oil Inlet/Outlet	Inch	3/8" Gas	3/8" Gas	3/8" Gas
Air Outlet (From MPV )	Inch	1/2" Gas	1/2" Gas	1/2" Gas
Oil nipples Size		3/4" 16 UN	3/4" 16 UN	3/4" 16 UN
Air nipples Size		M22 x 1.5	M22 x 1.5	M22 x 1.5
Thermostat Temp. Setting	°C	Three thermostat available: 55-70; 71-85 or 83-95		
Materials		Housing in aluminium alloy anodized. Internal parts in brass and viton sealings		
A	mm	240	274	274
A1	mm	213	248	268
B	mm	242	236	300
C1	mm	443	376	440
K	mm	345	385	417
Weight	Kg	19	30	43.5

